

2 iCommission

iCommission is a unique one-man-commissioning tool which helps to vertically align a PRO E detector from a distance of up to 220 meters.

It consists of:

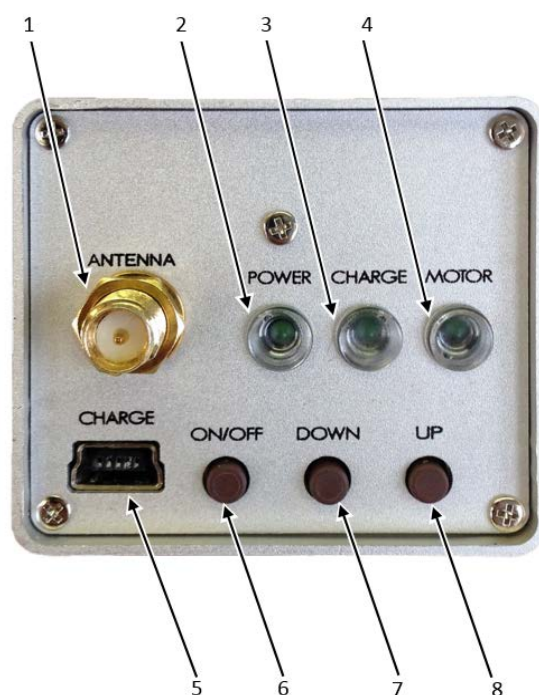
- The iCommission unit, which hooks onto the vertical alignment screw on the detector.
- The iCommission iOS app for compatible iOS devices (Apple iPhone, iPad, iPod touch).



Front view with user panel

Rear view with WiFi antenna, 4mm Allen/Hex key driver and clamps

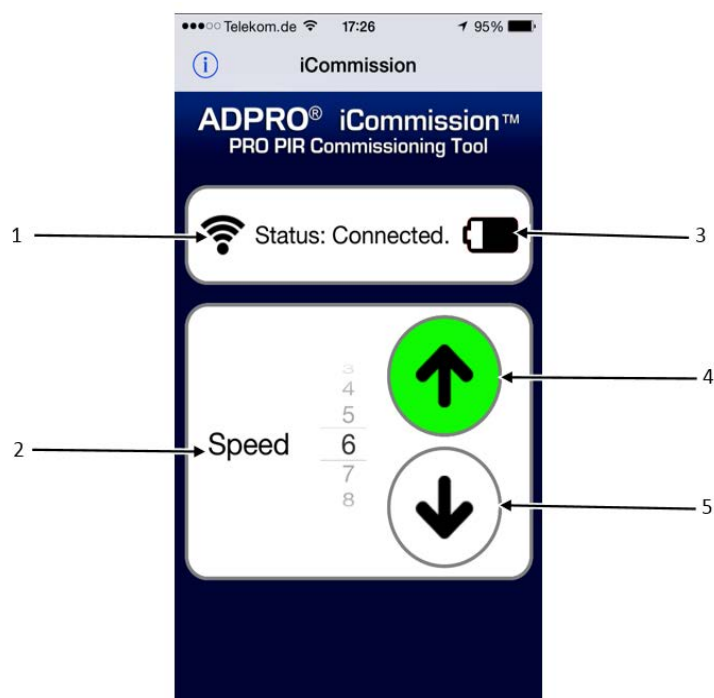
2.1 Front User Panel Overview



1	RP-SMA-connector Use to install included WiFi antenna
2	Power LED Lit when unit is switched on
3	Charge LED Lit while unit is being charged
4	Motor LED Lit while detector is moving up or down

5	Mini-USB port Charge iCommission with USB charger
6	ON/OFF button Press to switch iCommission on/off
7	DOWN button Press to lower detector
8	UP button Press to raise detector

2.2 iOS App Overview

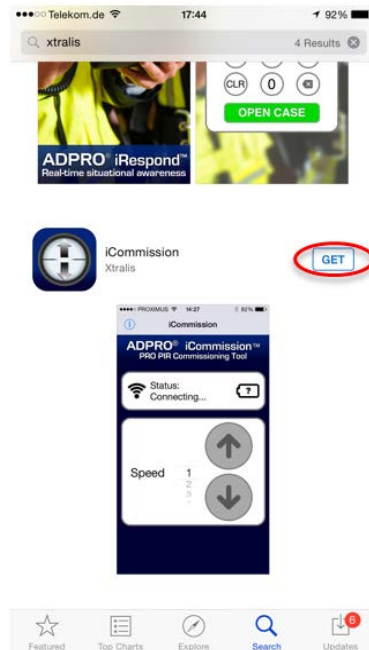


1	WiFi indication Shows connection status between iOS device and iCommission unit
2	Speed selection Roll to select speed of movement from slow (1) to fast (10)
3	Battery indicator Shows charge level of iCommission battery
4	UP button Tap for brief or hold for continuous raising of the detector
5	Down button Tap for brief or hold for continuous lowering of the detector

2.3 iCommission Installation and Alignment

To install the tool and align the detector, follow these steps:

1. Search for “Xtralis” in the App Store, scroll to the iCommission app and tap “GET” to install it.

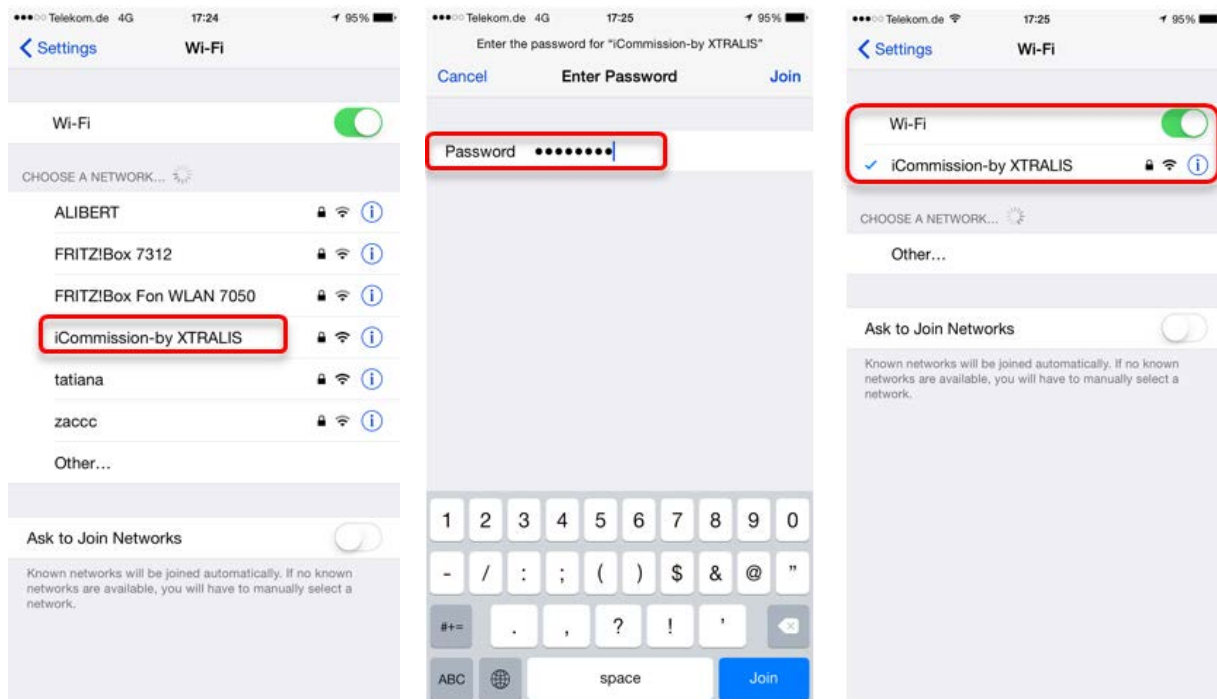


2. Make sure that the iCommission unit is fully charged, using a USB charger and a mini USB cable, place it on the vertical alignment screw of the PRO E detector as shown below:



3. Make sure that the 4mm hexagon driver connects inside the alignment screw and the outside clamps lock properly on the bracket.
4. Switch on the unit by pressing the left button until the LED switches on. After a few seconds, the iCommission creates its own WiFi hotspot with the following details:

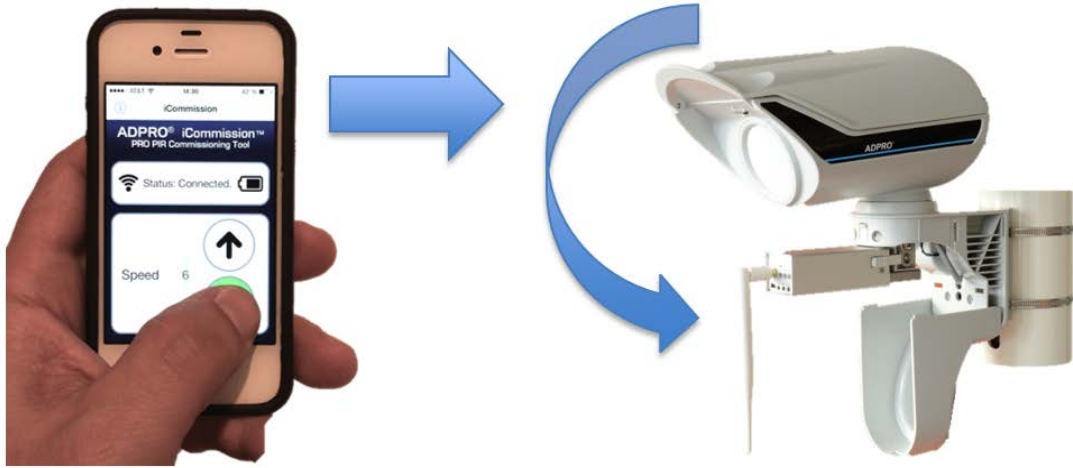
SSID: iCommission-by XTRALIS
 Password: 12345678



5. Use the up/down buttons on the front panel to rough-align the detector (see the ADPRO PRO E PIR Installation Manual, document no. (27386), section "Alignment with the help of the telescope").



6. Perform walk test at $\frac{1}{4}$, $\frac{1}{2}$ and full nominal range.
7. Use CT PRO 2 (see the ADPRO PRO E PIR Installation Manual, document no. (27386), section "CT PRO – wireless walk tester"), iPIR app with FastTrace 2 or remote controlled PC running PRO SW to determine performance and fine tune sensitivity.
If performance is still unsatisfactory, start the iCommission app and remotely change the vertical alignment up or down until the required performance is reached.



When the detector has full performance across the desired range, the vertical alignment is done and the iCommission unit can be removed. Continue with the commissioning process.